



PETCO

An Overview

Oscar Baruffa

Data & Strategic Projects

oscar.baruffa@petco.co.za

Overview

1. Mandate
2. Results
3. Supporting Recycling
4. Complimentary interventions
5. Industry Participation
6. Governance



Mandate

- Incorporated in 2004
- Non-profit, industry-driven Extended Producer Responsibility
- Founded, funded and managed by the Obligated Industry



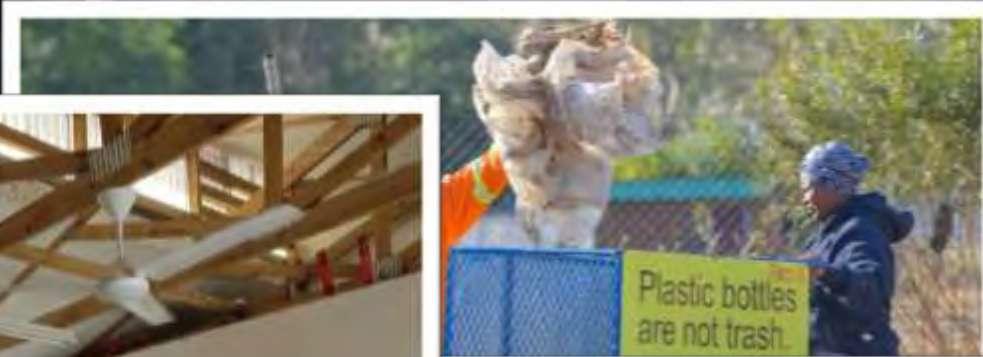
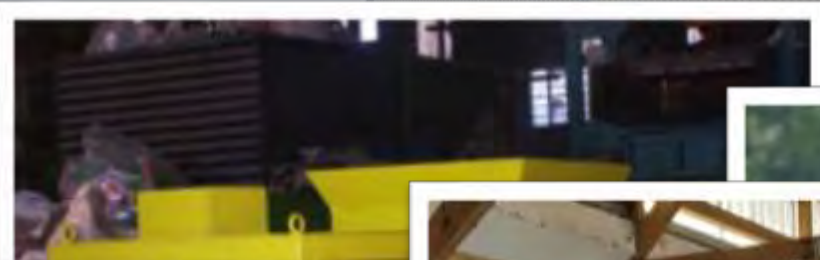
Results



Supporting Recycling

- Ensure end-use demand
- Support the recyclers through volatile commodity markets
- Ensure growth
- Collected bottles have somewhere to go





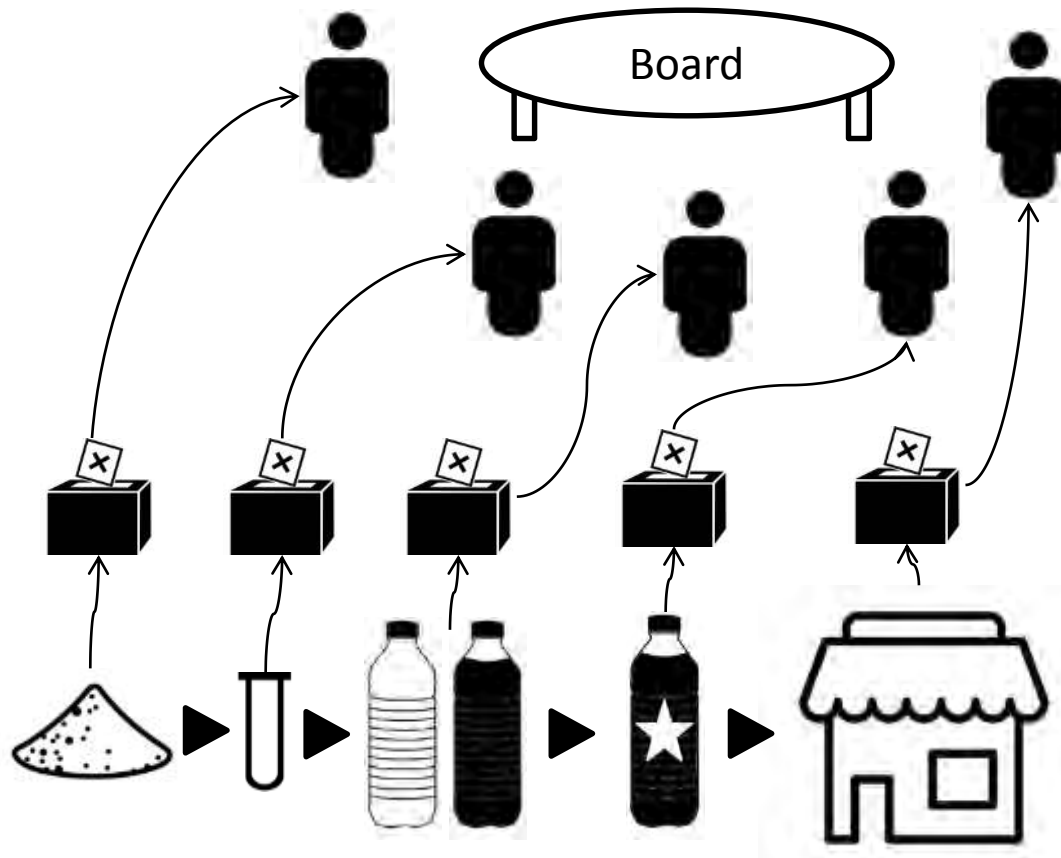
Thanks to our shareholder members:



WOOLWORTHS



Governance



- ✓ Unpaid position
- ✓ Represents Obligated Sector
- ✓ In touch with sector
- ✓ Accountable to peers
- ✓ Passionate about EPR
- ✓ Steers strategy
- ✓ Provides oversight
- ✓ Communicates to sector
- ✓ Appoints CEO

PET RECYCLING COMPANY NPC

Tel: 0860 147 738

Tel: Johannesburg: +27 11 615 8875

Tel: Cape Town: +27 21 794 6300

Email: info@petco.co.za

www.petco.co.za



Facebook: 1isPET



Twitter: 1isPET



Instagram: 1isPET



YouTube: 1isPET

