



Presenter: AM Melato

Melato, AM., Uys, C., Schutte, D., Odendaal JP

STRATEGY FOR MARINE WASTE: GUIDE TO  
ACTION FOR AFRICA

## **Title**

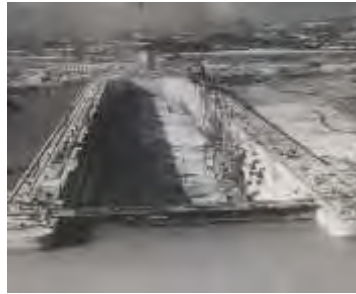
- Environmental knowledge, attitudes and perceptions of port of cape town users as it pertains to waste and pollution management

## **Research Question**

- What is the environmental knowledge, attitudes and perceptions of Port of Cape Town users as it pertains to waste and pollution management?

# Statement of Research Problem

There are numerous environmental challenges that ports are faced with in Southern Africa (EMD, 2004)

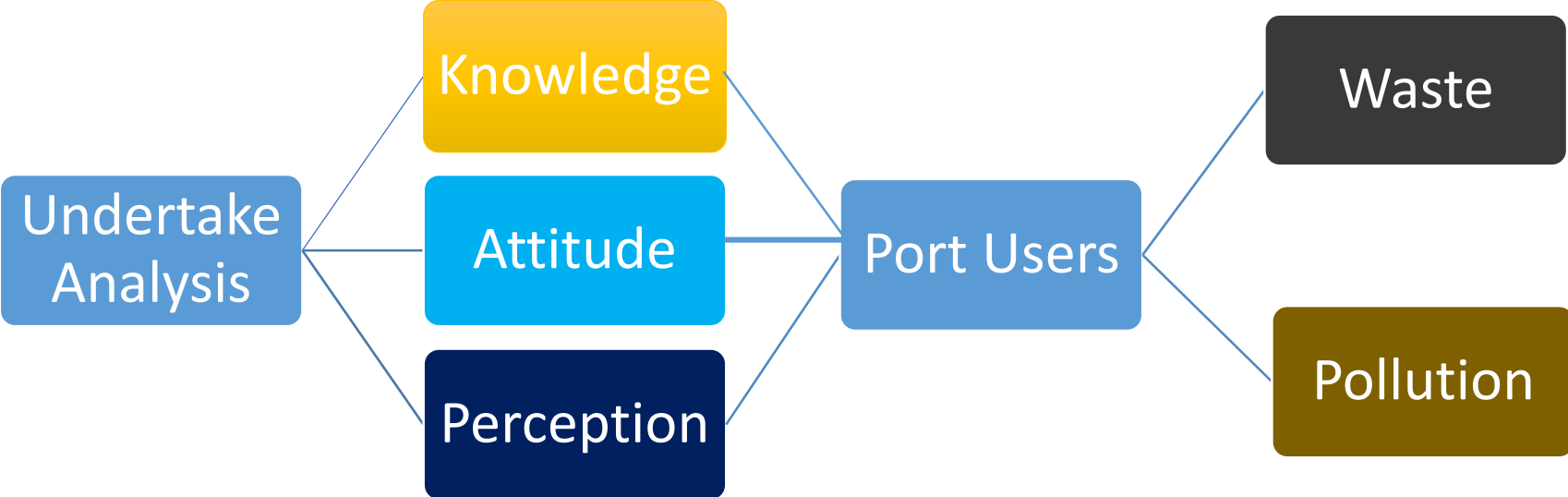


# Background of Research Problem

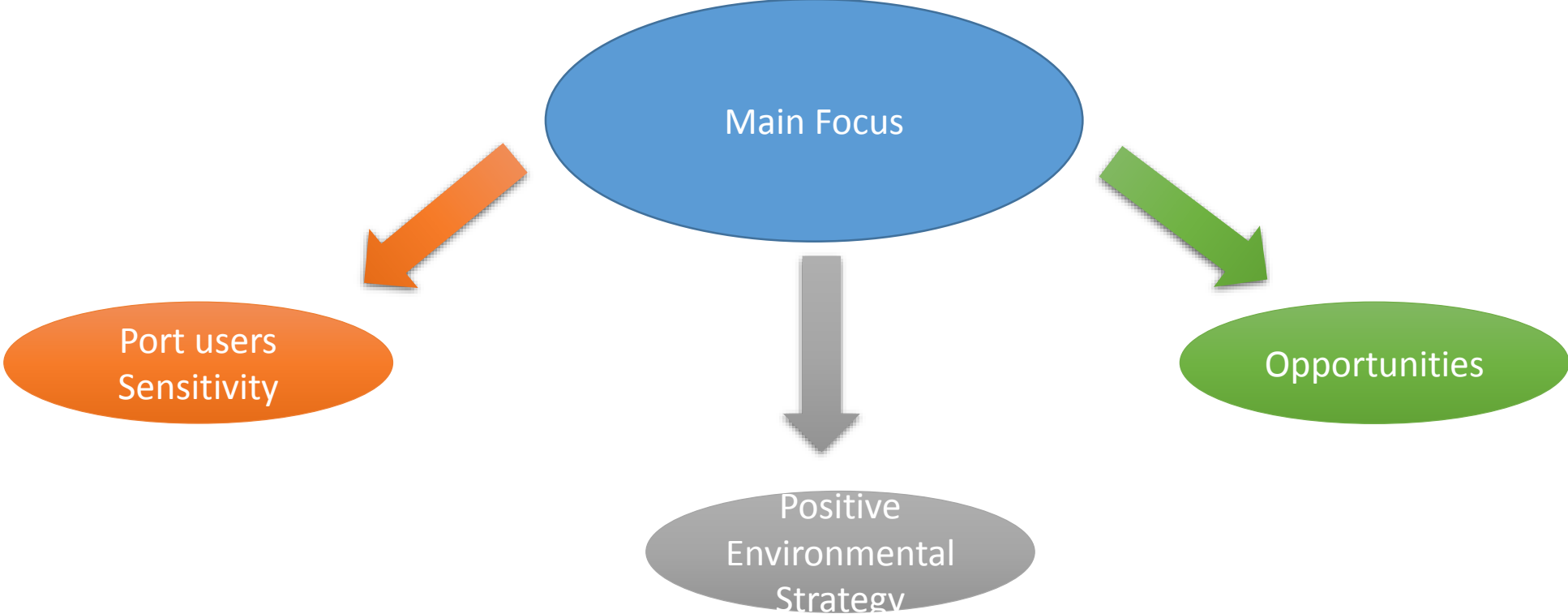
Environmental pollution in the Port of Cape Town is an on-going problem which has serious implications for port operations and for the future of the port and the surrounding environment



# Aim of the Research



# Aim of the Research



## Research Objectives

- To determine the current practices of port users
- To determine the knowledge, attitudes and perceptions of port users
- To identify the potential barriers and opportunities for the port
- To assess and evaluate the roles of relevant stakeholders  
(City of Cape Town, Western Cape government, National Government)  
other than port users in waste and pollution management in the port.

# Study Area





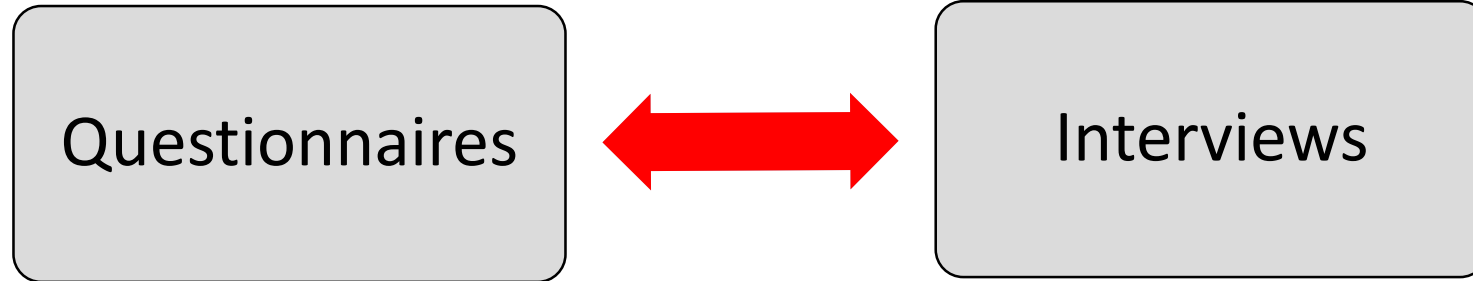
Research Process

```
graph TD; A[Research Process] --- B[Qualitative]; A --- C[Quantitative]
```

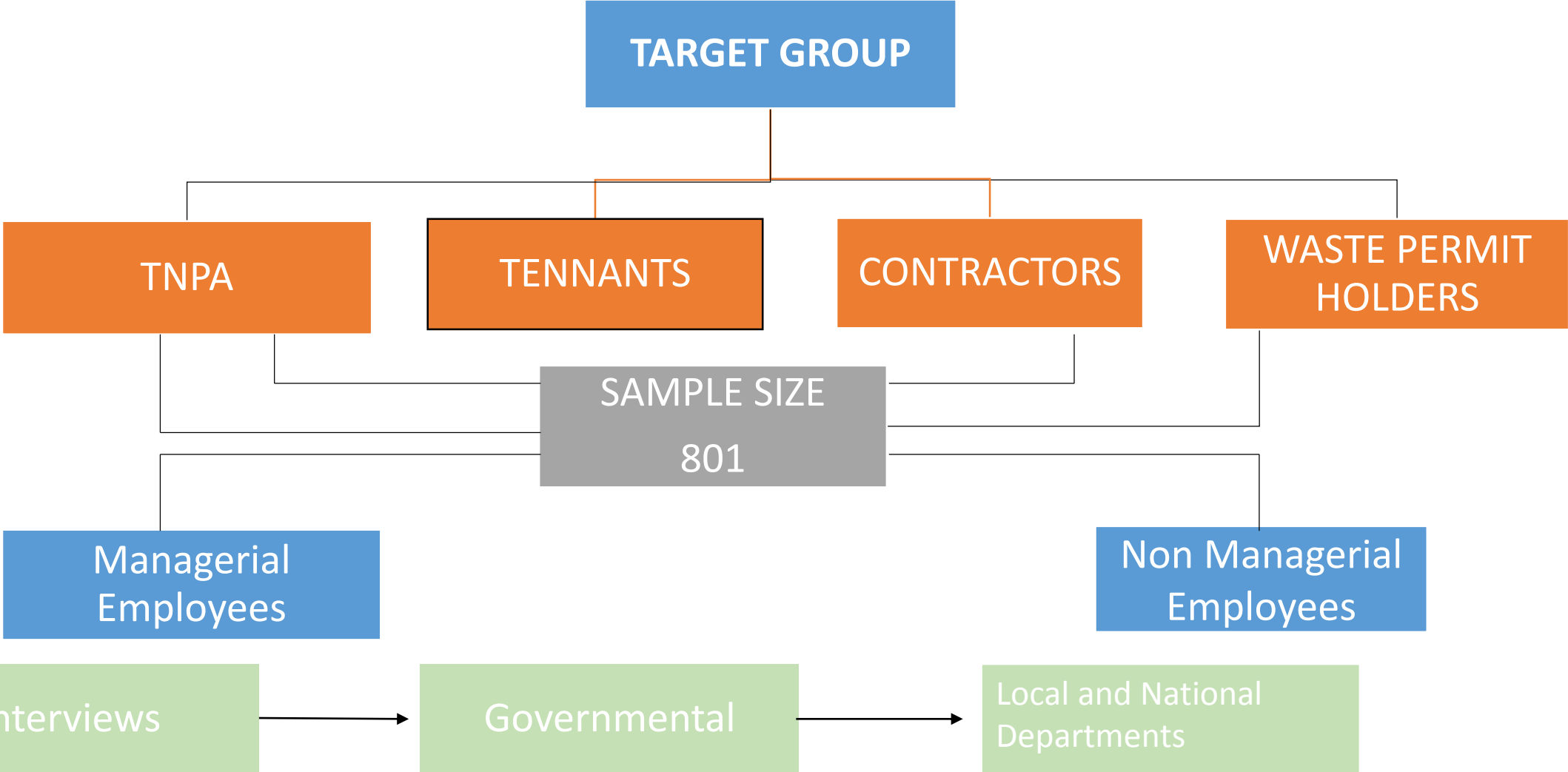
Qualitative

Quantitative

# Methods of Data Collection



# Target Groups



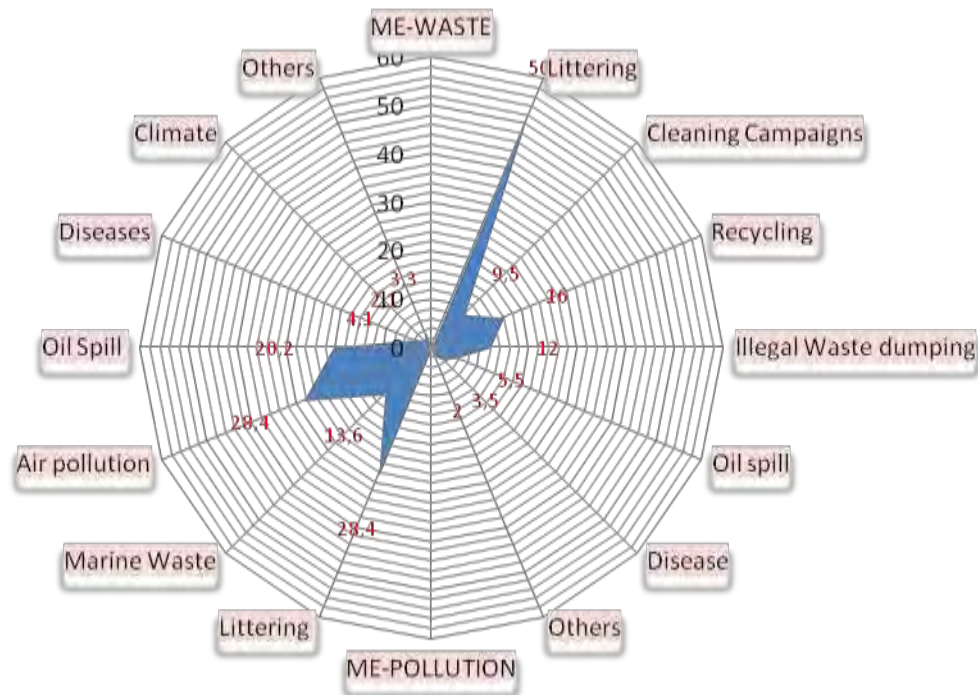
## Statistical Analysis

- Explorative Descriptive Study
- Statistical Analysis was used – SPSS Programme
- Data was mainly Non Parametric ordinal and Nominal Data
- Chi square - independent variables on dependent variable

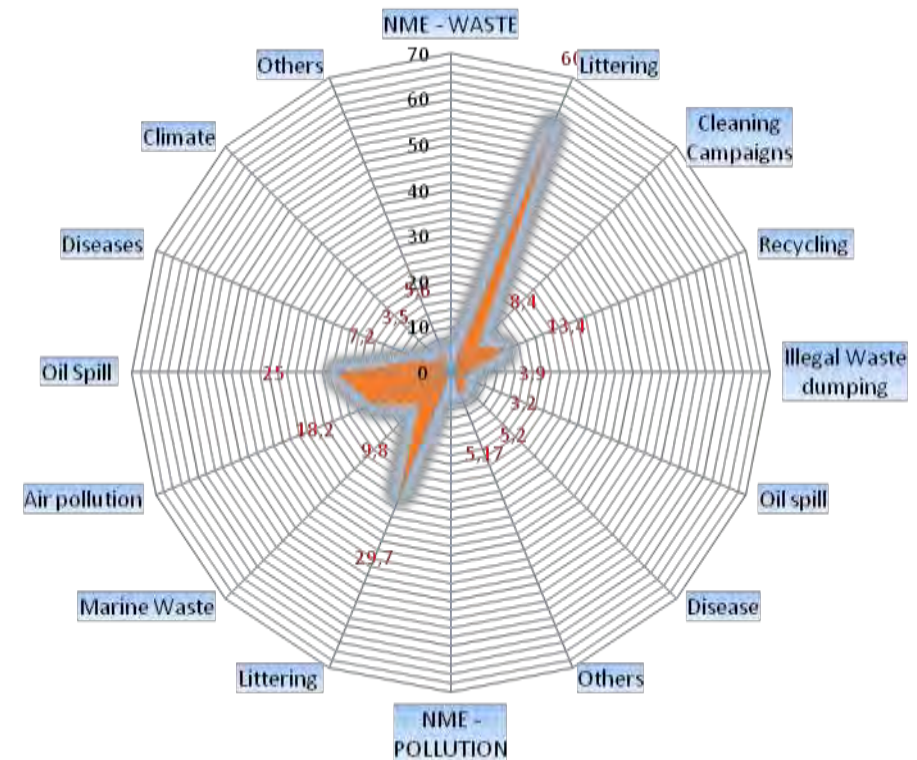
# RESULTS AND DISCUSSION

## What comes to mind about waste and pollution?

### Managerial Employees

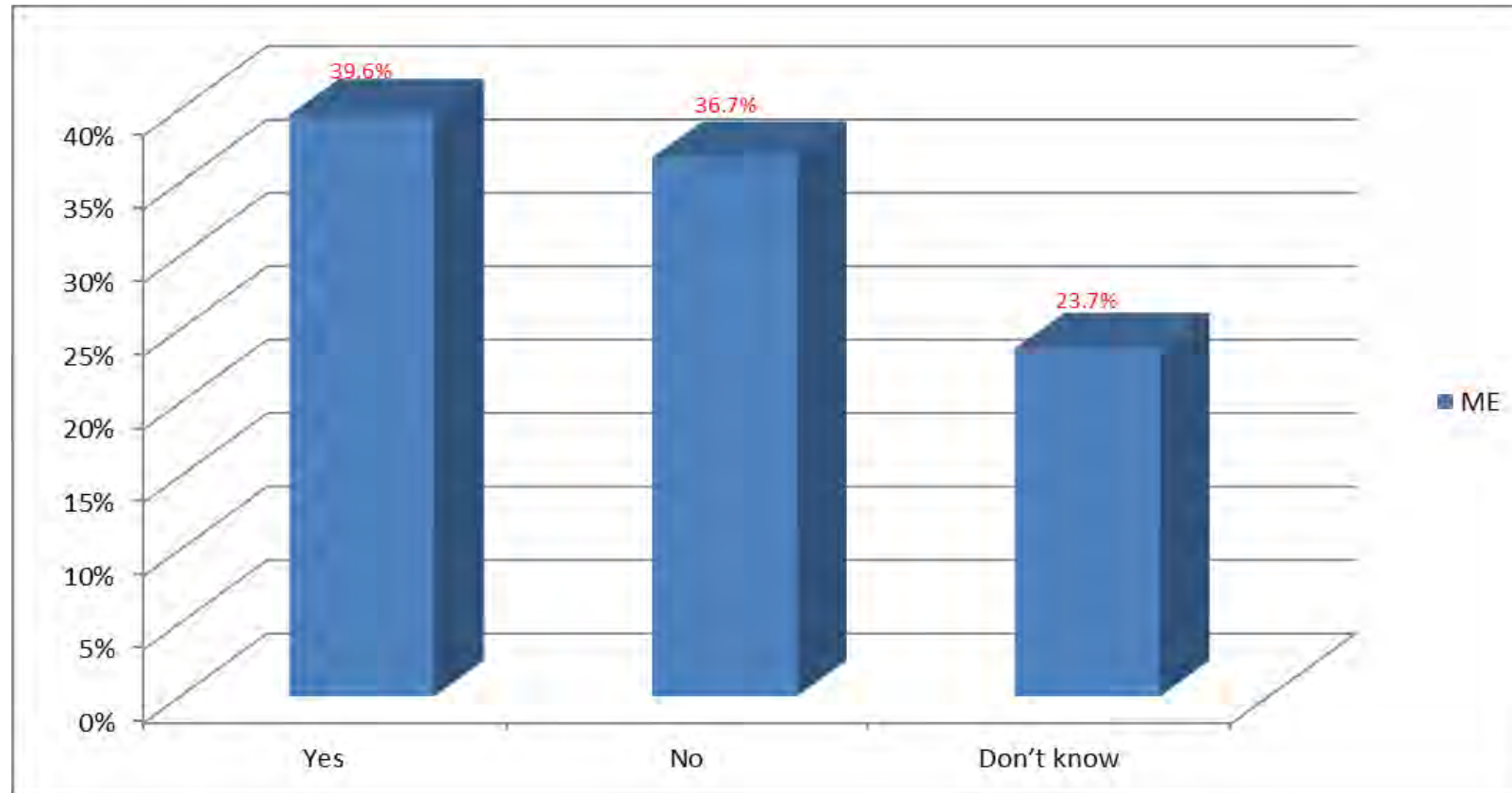


### Non Managerial Employees

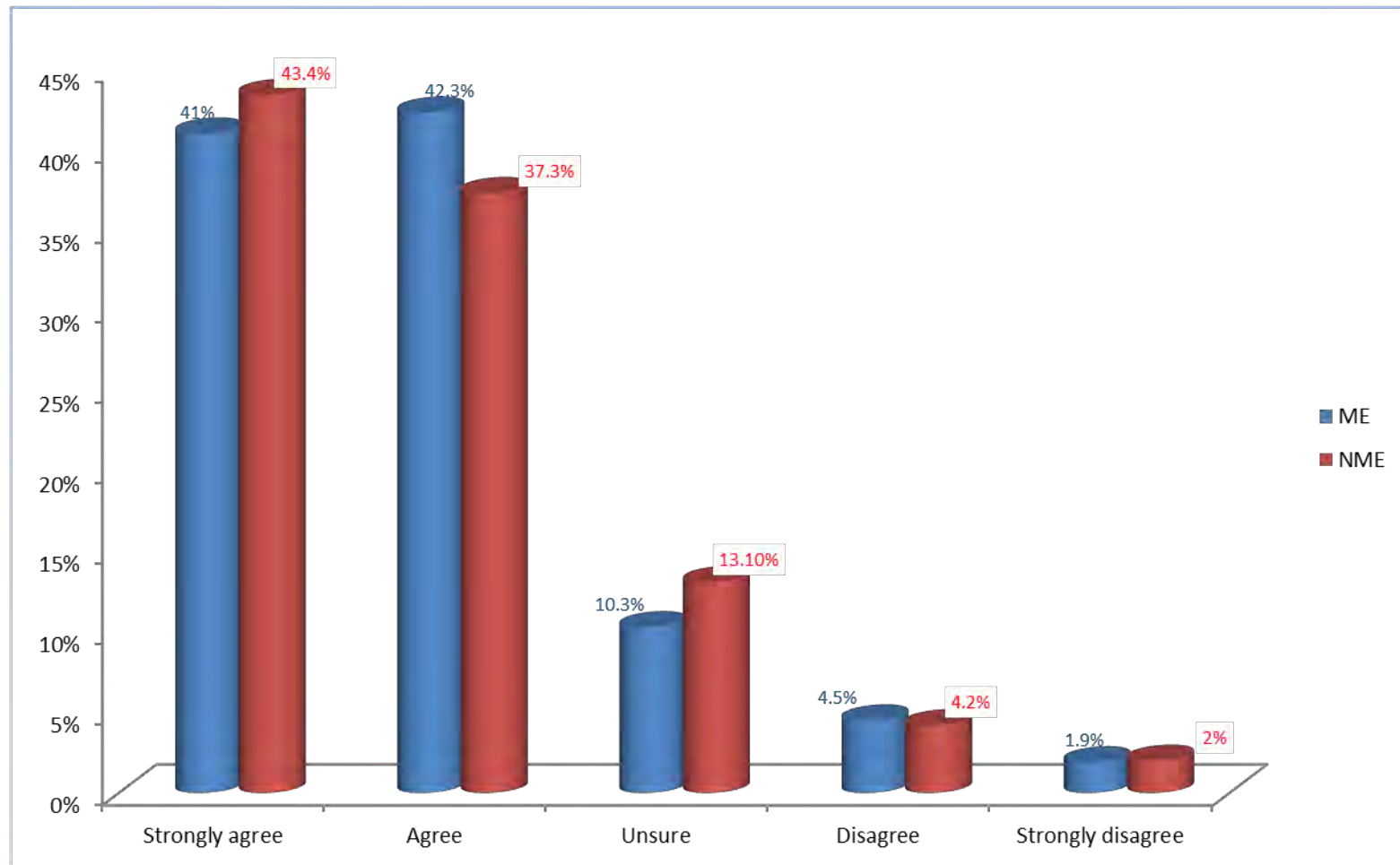


# AWARENESS

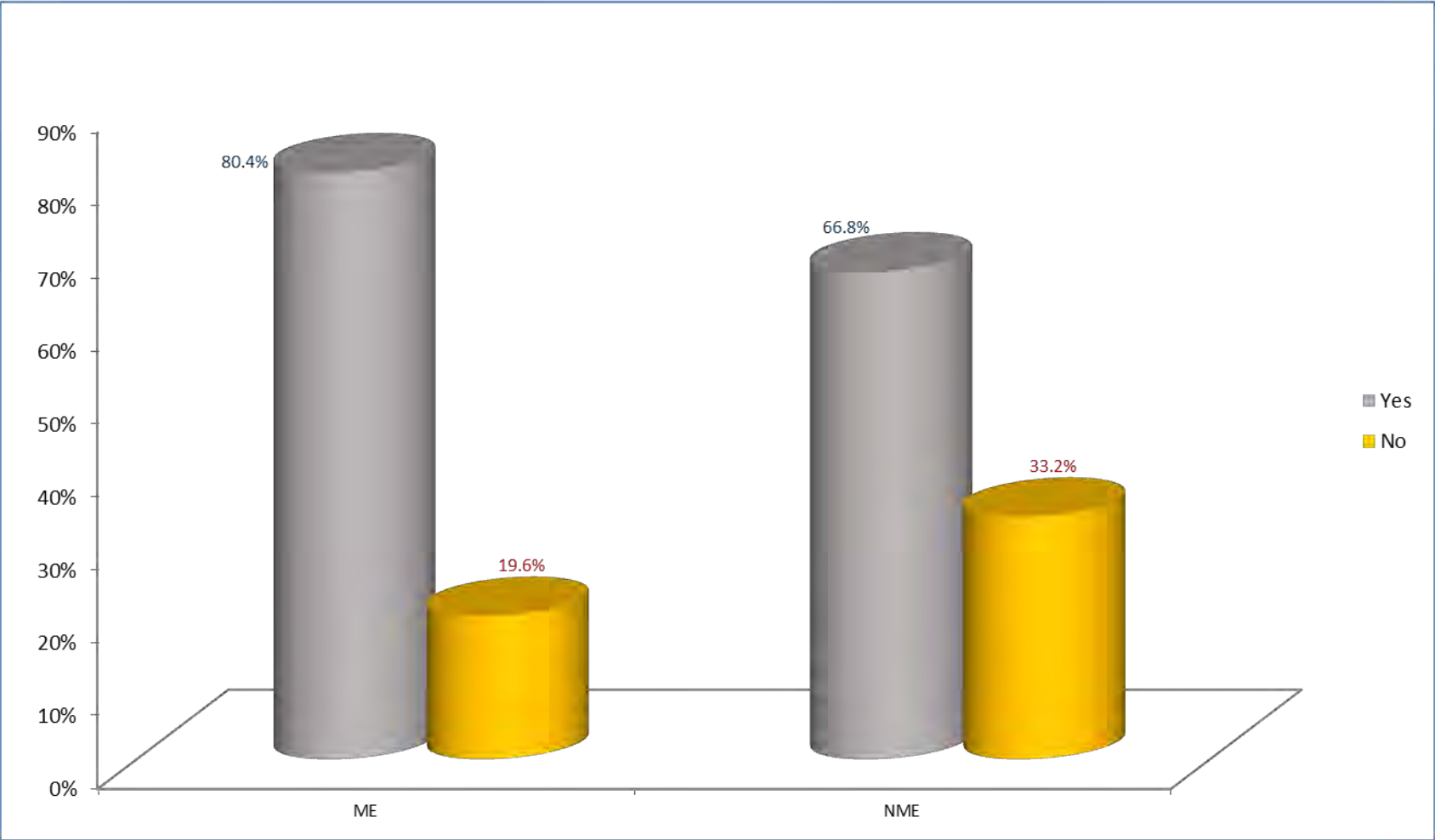
DO YOU COLLABORATE WITH OUTSIDE STAKEHOLDERS CONCERNING ENVIRONMENTAL AWARENESS?



## THERE IS FINANCIAL OPPORTUNITIES IN RECYCLING

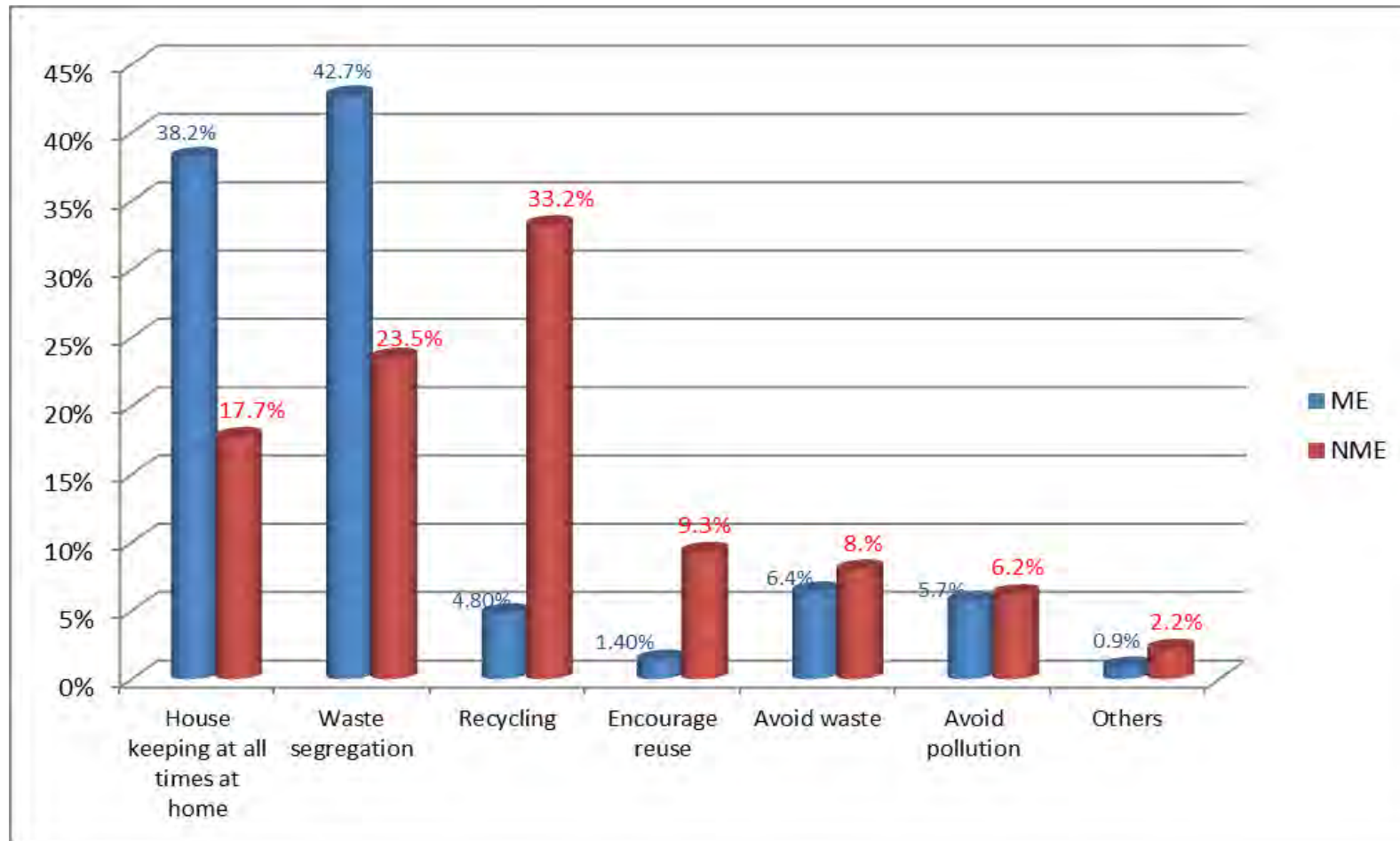


DO YOU APPLY ANY WASTE KNOWLEDGE THAT YOU HAVE LEARNT AT WORK AT YOUR HOME?



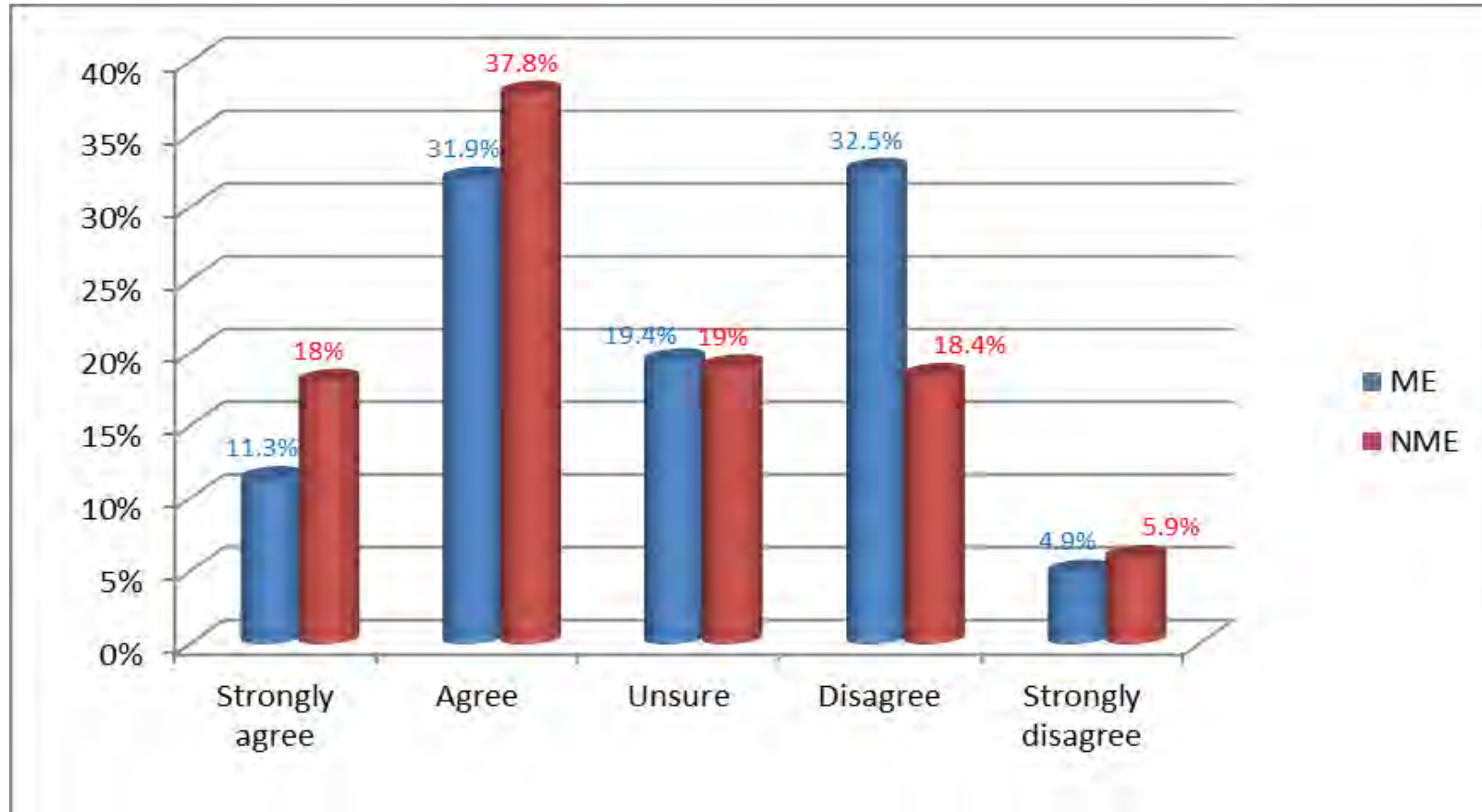


## HOME PRACTICE CONCERNING WASTE KNOWLEDGE

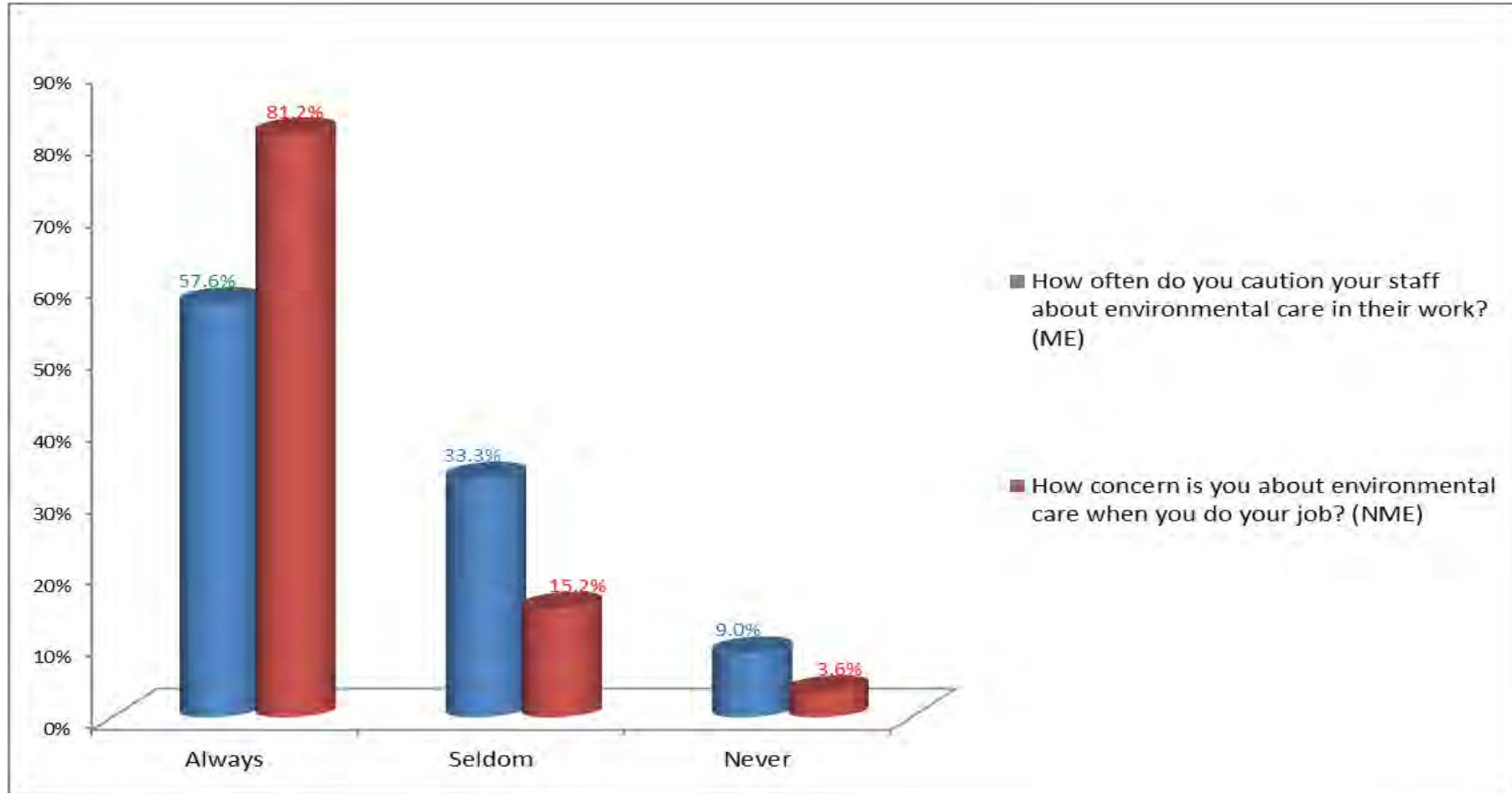


# PORT PERCEPTION

## THE PORT OF CAPE TOWN IS CLEAN

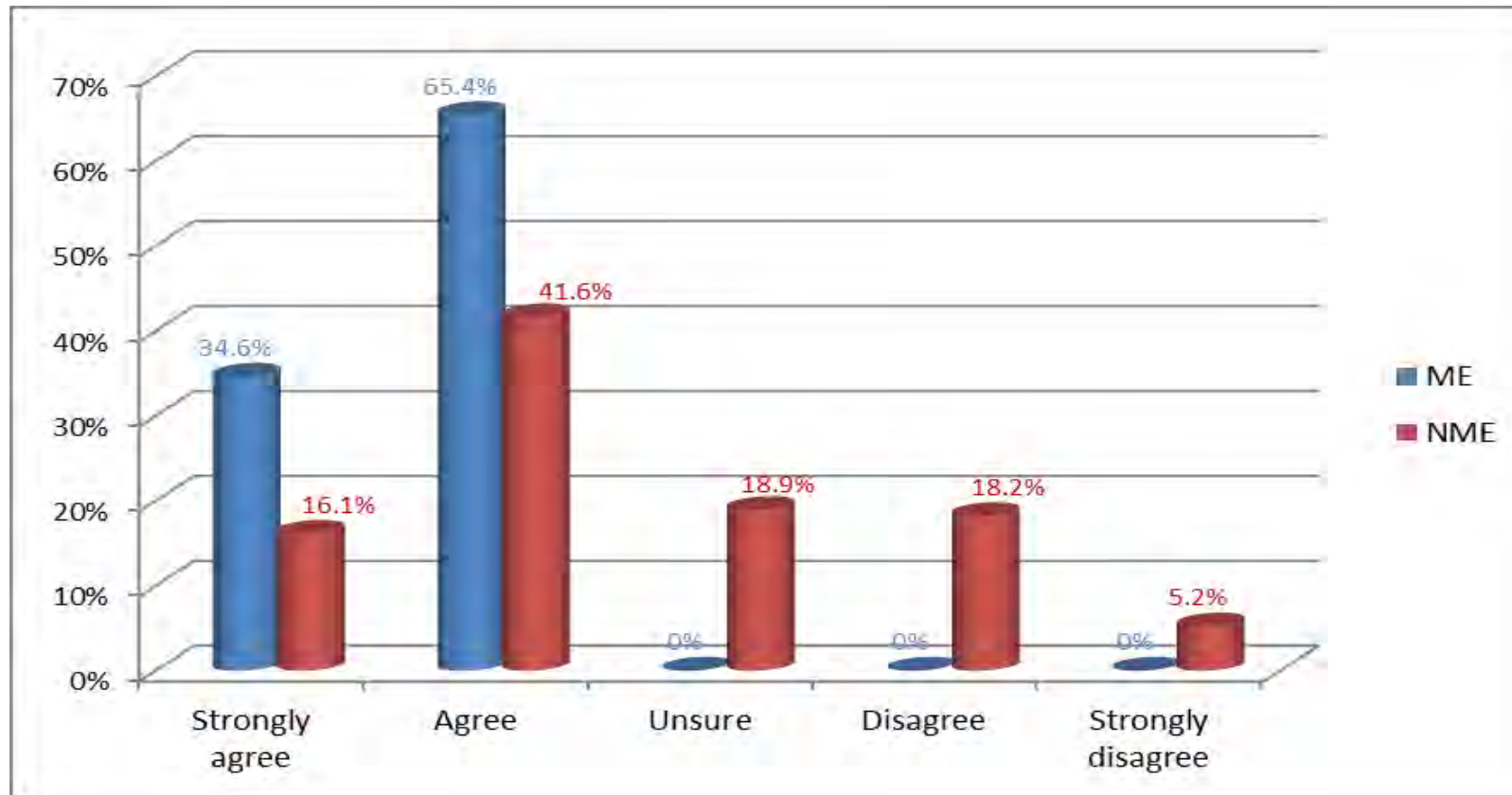


# PORT BEHAVIOUR CONCERNING WASTE & POLLUTION

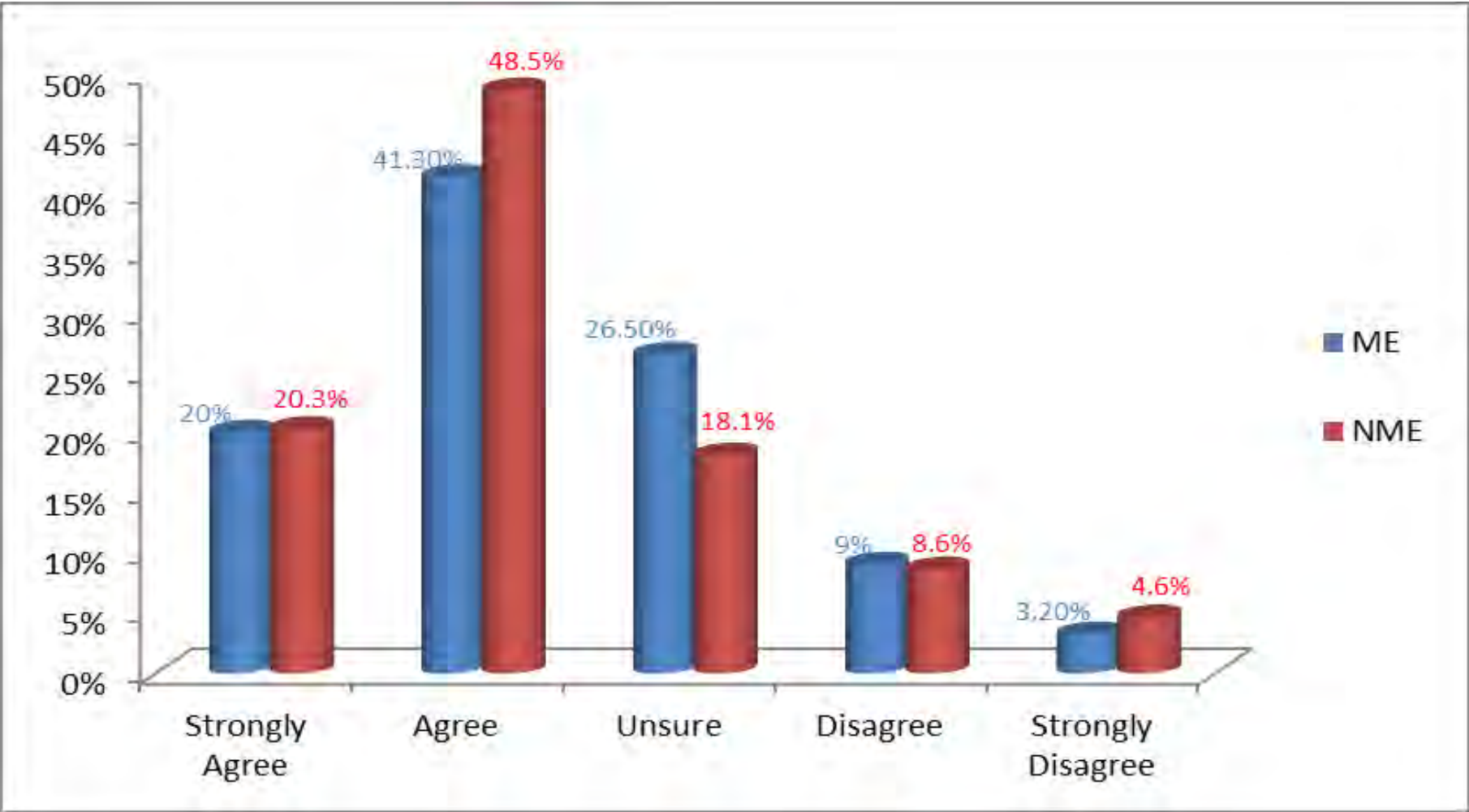


# KNOWLEDGE ABOUT WASTE MANAGEMENT

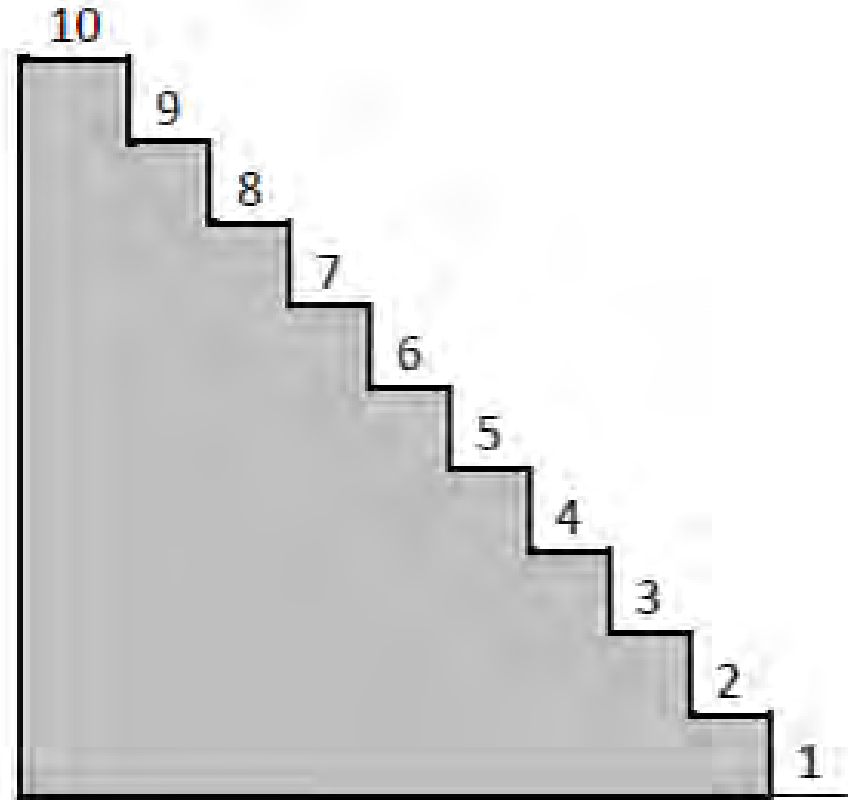
I AM INFORMED OF THE ENVIRONMENTAL LEGISLATIONS.



# THE WASTE IS DISPOSED CORRECTLY



# PORT PAST PRESENT & FUTURE



## CONCLUSION & RECOMMENDATION

- Interdepartmental relations are very crucial
- Collaboration for awareness campaigns
- Improve in our communication strategy
- Sharing of information is critical
- Incentives
- Lets learn to recognize or give an ear to our subordinates
- Home practice (First School to learn)



“For a lack of guidance nation fall, but in the multiple of advisers, there is safety.”

Proverbs : 11:14

Thank You !!!